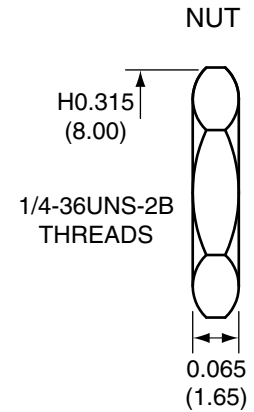
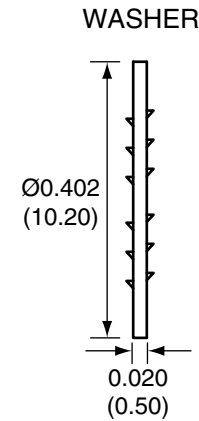
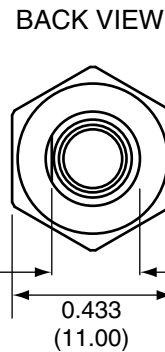
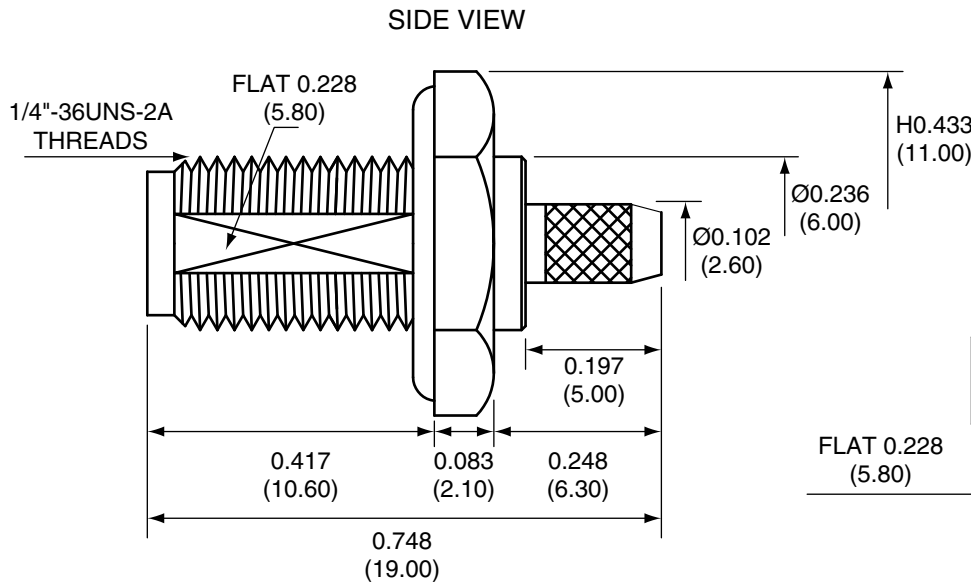
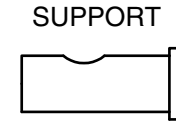
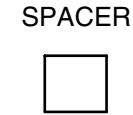
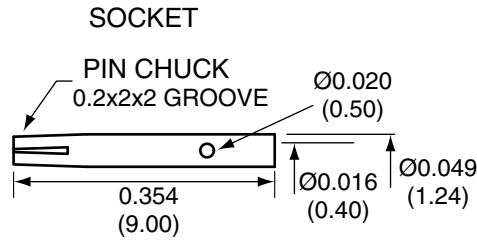
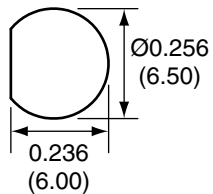


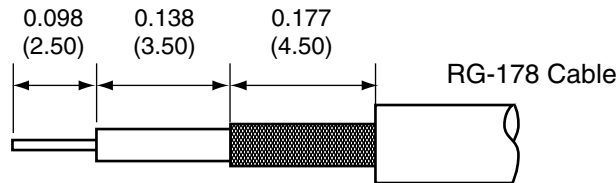
1		
Description	Material	Finish
Body	Brass	Nickel
Socket	BE CU	Gold
Insulation	Teflon	Teflon
O Ring	Si Rubber	Rubber
Washer	Brass	Nickel
Nut	Brass	Nickel
Spacer	Teflon	Teflon
Support	Brass	Nickel



RECOMMENDED MOUNTING HOLE



RECOMMENDED CABLE STRIPPING DIMENSIONS



CON SMA014-R178 ASSEMBLY INSTRUCTIONS

- Strip the cable to the recommended dimensions.
- Solder the support onto the braid.
- Place the spacer onto the center conductor.
- Solder or crimp the socket onto the center conductor.
- Insert the socket, center conductor, spacer, and support into the body until the top of the socket is even with the white insulation in the body.
- Crimp the tail of the body onto the support with a hex crimp tool.

Title SMA FEMALE BULKHEAD MOUNT CABLE END CRIMP WITH O-RING FOR RG178 CABLE		CONNECTOR CITY 159 ORT LANE MERLIN, OR 97532 PH (541)-471-6256 FAX (541)-471-6251	
Part No. CON SMA014-R178	Revision: 1.0		
Dimensions: INCHES (mm)	Date: 6/2/2006	Sheet 1 of 1	

